

PROACT.®

REFERENCE : PA330

SIZES : XS_S_M_L_XL_XXL_3XL_4XL

COMPOSITION :

Main fabric : Nylon oxford PU coating - 120 100%polyamide
 Main fabric : Nylon oxford PU coating - 120 For top contrasted yoke:

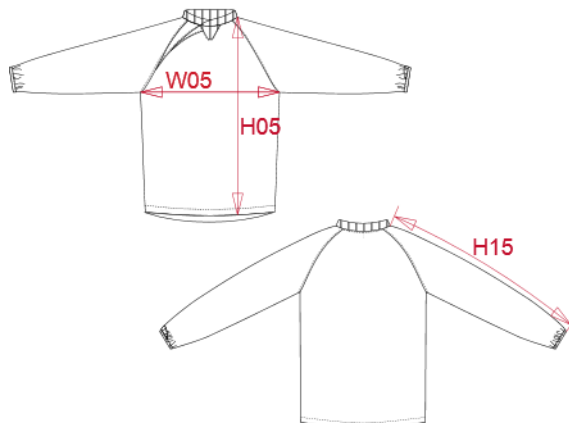
Main fabric : Nylon oxford PU coating - 120 For bottom contrasted yoke and left sleeve yoke. 100%polyamide

WEIGHT :

Main fabric : 120gsm
 Main fabric : 120gsm
 Main fabric : 120gsm

ARTICLE WEIGHT :

240gr/pc



DESCRIPTION	
Français : Sweat de pluie	
English : Rain sweat	
Nederlands : RAIN SWEATER	
Deutsch : REGEN-SWEATSHIRT	
Español : SUDADERA PARA LLUVIA	
Italiano : FELPA ANTIPIOGGIA	
Português : SWEAT PARA A CHUVA	

COLORS	PANTONE SERIGRAPHIE
Black / White / Storm grey	Black / White / 425C
Sporty navy / White / Storm grey	7546C / White / 425C

MEASUREMENT									
Description	XS	S	M	L	XL	XXL	3XL	4XL	
H05 Hauteur totale devant / Front total height	73,50	75,50	77,50	79,50	81,50	83,50	85,50	88,30	
W05 1/2 largeur poitrine / 1/2 chest width	53	56	59	62	65	68	71	75	
H15 Longueur manche / Sleeve length	76,50	79,30	82,10	85	87,90	90,80	93,60	96,80	

CARE LABEL				

PACKING	
Box	50 pcs / box XS-S => L:57cm W:41cm H:18cm GW:11kg NW:10kg M-L => L:63cm W:44cm H:18cm GW:13kg NW:12kg XL-XXL => L:69cm W:47cm H:18cm GW:14.5kg NW:13kg 3XL-4XL => L:76cm W:50cm H:18cm GW:15.5kg NW:14kg